

WATER MAIN NOTES:

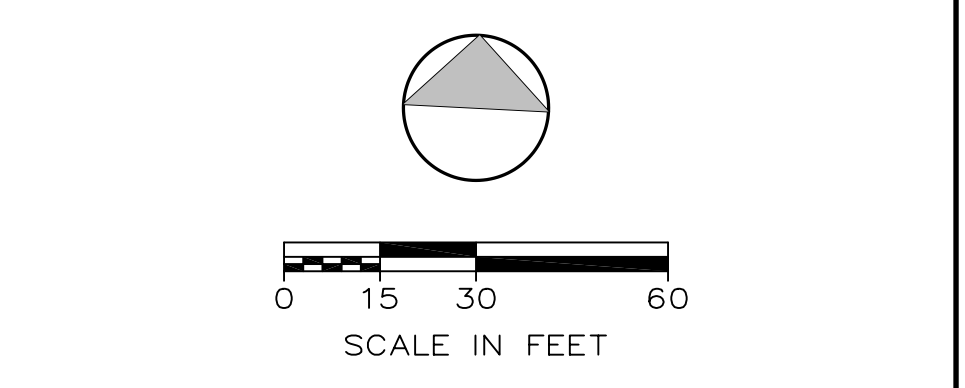
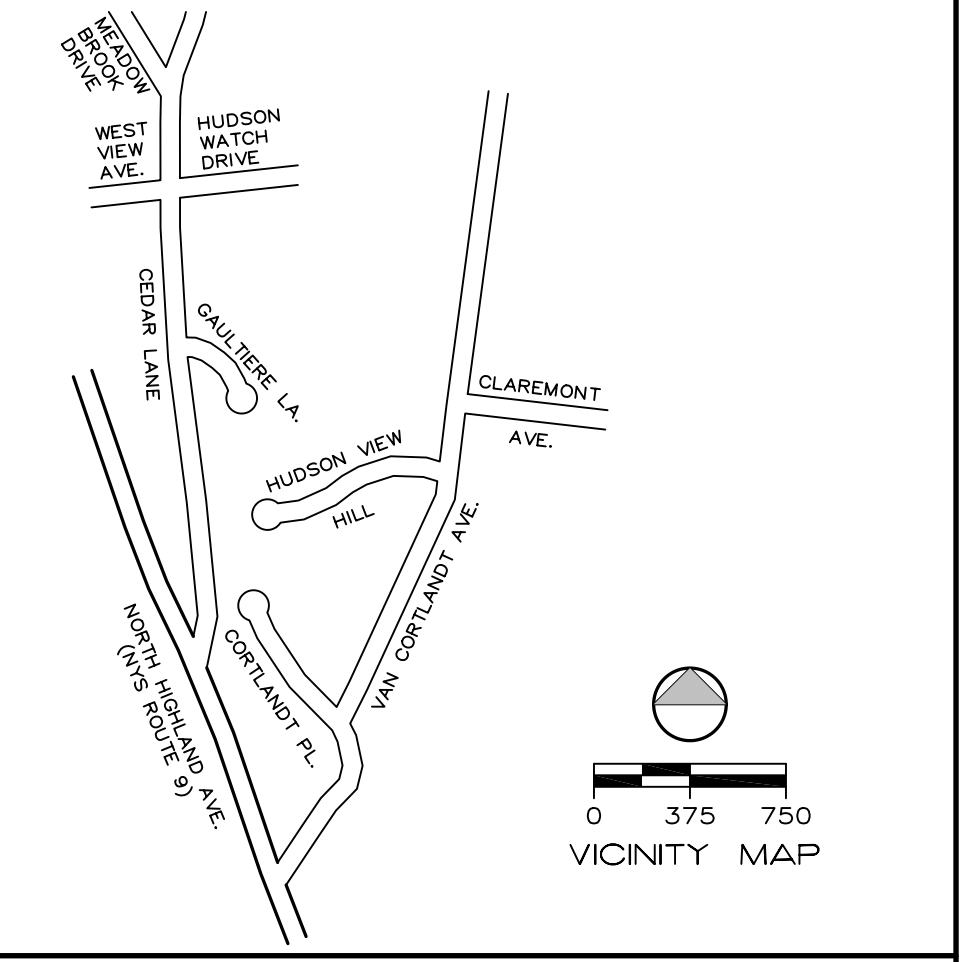
1. ALL METHODS, MATERIALS, FITTINGS, DEVICES, DIMENSIONAL REQUIREMENTS AND PROCEDURES NECESSARY TO COMPLETE THE WORK SHOWN HEREON SHALL MEET THE APPROPRIATE CURRENT AWWA SPECIFICATIONS IN EFFECT AS WELL AS ALL REQUIREMENTS DEEMED APPLICABLE BY THE WESTCHESTER COUNTY HEALTH DEPARTMENT OR ANY OTHER GOVERNMENTAL BODY HAVING JURISDICTION OVER SAID WORK.
2. ALL WATER MAIN PIPE SHALL BE AWWA C151-76 THICKNESS CLASS FIFTY-THREE (53) CEMENT LINED DUCTILE IRON PUSH-ON (RUBBER GASKET) TYPE AND INSTALLED WITH TWO (2) BRONZE WEDGES PER JOINT. INSTALLATION SHALL BE "TYPE 2" AS PRESCRIBED IN AWWA C600-77, PAGE 6. MECHANICAL JOINTS SHALL HAVE RETAINER GLANDS.
3. ALL PIPE FITTINGS SHALL BE DUCTILE IRON UNLESS NOTED OTHERWISE.
4. ALL GATE VALVES SHALL BE "MUELLER" OR APPROVED EQUAL, IRON BODY, NON-RISING STEM-CONVENTIONAL PACKING, BRONZE MOUNTED, DOUBLE DISC TYPE WITH MECHANICAL JOINT CONNECTIONS. OPENING SHALL BE RIGHT (CW) AND OPERATION SHALL BE BY 2" SQUARE WRENCH NUT. MINIMUM WORKING PRESSURE SHALL BE 200 PSI.
5. ALL VALVE BOXES SHALL BE TWO-PIECE SLIDING BUFFALO TYPE SET ON WOODEN BLOCKS POSITIONED PERPENDICULAR TO THE PIPE AND ON COMPACTED BACKFILL.
6. ALL CHANGES IN PIPE LINE DIRECTION, BOTH HORIZONTAL AND VERTICAL SHALL BE TIE-RODDED AND THRUST BLOCKED WITH CONCRETE AGAINST UNDISTURBED EARTH AS DIRECTED BY THE ENGINEER.
7. ALL FIRE HYDRANTS SHALL BE "MUELLER" CENTURION WITH SAFETY BREAKAWAY FLANGE, 3-WAY, OPENING LEFT (CCW). THE PUMPER NOZZLE SHALL BE 4 1/2". THE TWO HOSE NOZZLES SHALL BE 2 1/2".
8. WHERE WATER MAIN CROSSES BELOW A CULVERT OR OTHER CONDUIT, CONCRETE SUPPORT BLOCKS SHALL BE PLACED ON BOTH SIDES OF WATER MAIN TO ELIMINATE ANY IMPROVED LOADING ON WATER MAIN FROM THE CULVERT OR OTHER CONDUIT.
9. FLUSH OUT ALL WATER MAINS AND APPURTENANCES AS DIRECTED BY THE ENGINEER UNTIL THE WATER RUNS CLEAN AND FREE OF RUST AND DIRT. PRESSURIZE ALL LINES AND APPURTENANCES FOR FORTY-EIGHT (48) HOURS, OR AS DIRECTED BY THE ENGINEER, TO DETECT ANY LEAKS OR BROKEN PIPE. THIS SHALL ALL BE DONE EITHER AS A TOTAL PROJECT OR BETWEEN VALVED SECTIONS AS DIRECTED BY THE ENGINEER. IF PRESSURE TESTING REVEALS ANY LEAKS OR DIFFICULTIES THE CONTRACTOR SHALL PROMPTLY UNCOVER THE LEAK OR BROKEN PIPE AND IMMEDIATELY REPAIR AND RETEST SAME. THIS SHALL BE REPEATED AS MANY TIMES AS MAY BE REQUIRED TO DEMONSTRATE A TIGHT LINE TO THE SATISFACTION OF THE ENGINEER. THE NEW WATERMAIN AND APPURTENANCES SHALL BE PRESSURE TESTED IN ACCORDANCE WITH THE LATEST REVISION OF AWWA C-600 AND WESTCHESTER COUNTY DEPT. OF HEALTH RULES AND REGS.
10. WESTCHESTER COUNTY DEPT. OF HEALTH MUST BE NOTIFIED FORTY-EIGHT (48) HOURS PRIOR TO PRESSURE TESTING.
11. ALL WATER MAINS AND APPURTENANCES SHALL BE DISINFECTED TO THE SATISFACTION OF THE ENGINEER, AND IN ACCORDANCE WITH THE STANDARDS OF THE WESTCHESTER COUNTY DEPT. OF HEALTH. THIS SHALL ALSO BE DONE IN ACCORDANCE WITH AWWA C651-99 (OR LATEST EDITION) EXCEPT THAT THE PROCEDURE IN SECTION 5.1 WILL NOT BE ALLOWED. A MINIMUM OF TWO (2) BACTERIAL TESTS TAKEN TWENTY-FOUR (24) HOURS APART ARE REQUIRED.
12. NEW HYDRANT DRAINS SHALL BE PLUGGED AT LOCATIONS WHERE THE GROUND WATER TABLE IS WITHIN FEET OF FINISHED GRADE. SUCH LOCATIONS HYDRANT BARRELS SHALL BE PUMPED DRY AFTER EACH USE.

SANITARY SEWER NOTES:

1. SANITARY SEWERS ARE TO BE OF SDR 35 PVC (OR HEAVIER IF REQUIRED BY THE TOWN ENGINEER DUE TO LOADING CONDITIONS).
2. CEMENT LINED CAST IRON TYTON JOINT CLASS 52 PIPE SHALL BE USED AT ALL STREAM CROSSINGS FOR A DISTANCE OF 10' ON EITHER SIDE AND ENCASED IN CONCRETE UNDER STREAM BED AND INTO BACK ON EITHER SIDE A DISTANCE 100'.
3. SANITARY MANHOLES SHALL BE PRECAST IN ACCORDANCE WITH APPROVED STANDARDS AND SHALL BE SPACED A MAXIMUM DISTANCE OF 300' ON STRAIGHT RUNS AND INSTALLED AT EVERY CHANGE IN ALIGNMENT AND DIFFERENCE IN ELEVATION OF INCOMING AND OUTGOING SEWERS. MANHOLE POSITIONING SHALL BE AS TO PREVENT THE ENTRANCE OF SURFACE WATER DURING STORMS.
4. ALL BUILDING SEWER CONNECTIONS SHALL HAVE A CLEANOUT INSTALLED AT THE PROPERTY LINE AND/OR EASEMENT LINE AT TIME OF CONSTRUCTION.
5. LEAKAGE OUTWARD OR THE INFILTRATION SHALL NOT EXCEED ONE HUNDRED (100) GALLONS PER INCH OF SEWER PIPE DIAMETER PER MILE PER DAY FOR ANY SECTION OF THE SEWERAGE SYSTEM AND MANHOLES.
6. INFILTRATION, EXFILTRATION AND VISUAL TESTS BY MEANS OF LIGHT FLASHING BETWEEN MANHOLES SHALL BE AS PER REQUIREMENTS OF TOWN ENGINEER. NO TESTS SHALL BE MADE UNTIL TWO (2) WEEKS AFTER BACKFILLING OF SANITARY SEWERS OR LONGER IF CONDITIONS, IN THE OPINION OF THE TOWN ENGINEER, WARRANT IT.
7. ALL HOUSE LATERALS TO BE INSTALLED BY PLUMBERS, LICENSED IN THE TOWN OF OSSINING AND ALL WORK SHALL BE INSPECTED BEFORE BACKFILLING.
8. ALL PIPE SHALL BE BEDDED (CUSHIONED) ON MINIMUM OF 6" THICK LAYER OF 3/4" CRUSHED STONE. ADDITIONALLY, THE 3/4" CRUSHED STONES SHALL BE PLACED 1/4 THE HEIGHT OF THE PIPE ZONE.
9. SANITARY SEWER CONSTRUCTION SHALL MEET ALL SEWER CONSTRUCTION SPECIFICATIONS FOR THE TOWN OF OSSINING.

CONSTRUCTION NOTES:

1. THE CONTRACTOR SHALL LOCATE AND VERIFY IN THE FIELD ALL UTILITIES - GAS, WATER, ELECTRICAL BEFORE THE START OF CONSTRUCTION. CONTRACTOR SHALL CALL CODE 753 (FORMERLY CODE 53).
2. THE INSTALLATION OF WATER AND SEWER SHALL BE UNDER THE DIRECTION OF A N.Y. STATE LICENSED PROFESSIONAL ENGINEER.
3. EROSION CONTROL MEASURES, INCLUDING STAKED HAYBALES, SHALL BE REQUIRED AS DIRECTED BY THE TOWN, ACCORDING TO STANDARDS DESCRIBED IN THE WESTCHESTER COUNTY BEST MANAGEMENT PRACTICES MANUAL FOR CONSTRUCTION ACTIVITIES.
4. AS BUILT PLANS SHALL BE REQUIRED AND CERTIFIED BY A N.Y. STATE LICENSED PROFESSIONAL ENGINEER.
5. ALL PROPERTY DISTURBED IN THE R.O.W. OR ON PRIVATE LANDS, SHALL BE RESTORED TO NEW CONDITIONS.
6. THE CONTRACTOR SHALL BE RESPONSIBLE FOR ALL APPLICATIONS AND PERMITS REQUIRED FOR CONSTRUCTION.
7. THE ROAD AND UTILITIES SHALL BE STAKED IN THE FIELD BY A N.Y. STATE LICENSED SURVEYOR.
8. UNDERGROUND GAS AND ELECTRIC SHALL BE AS REQUIRED BY THE TOWN AND CON EDISON.

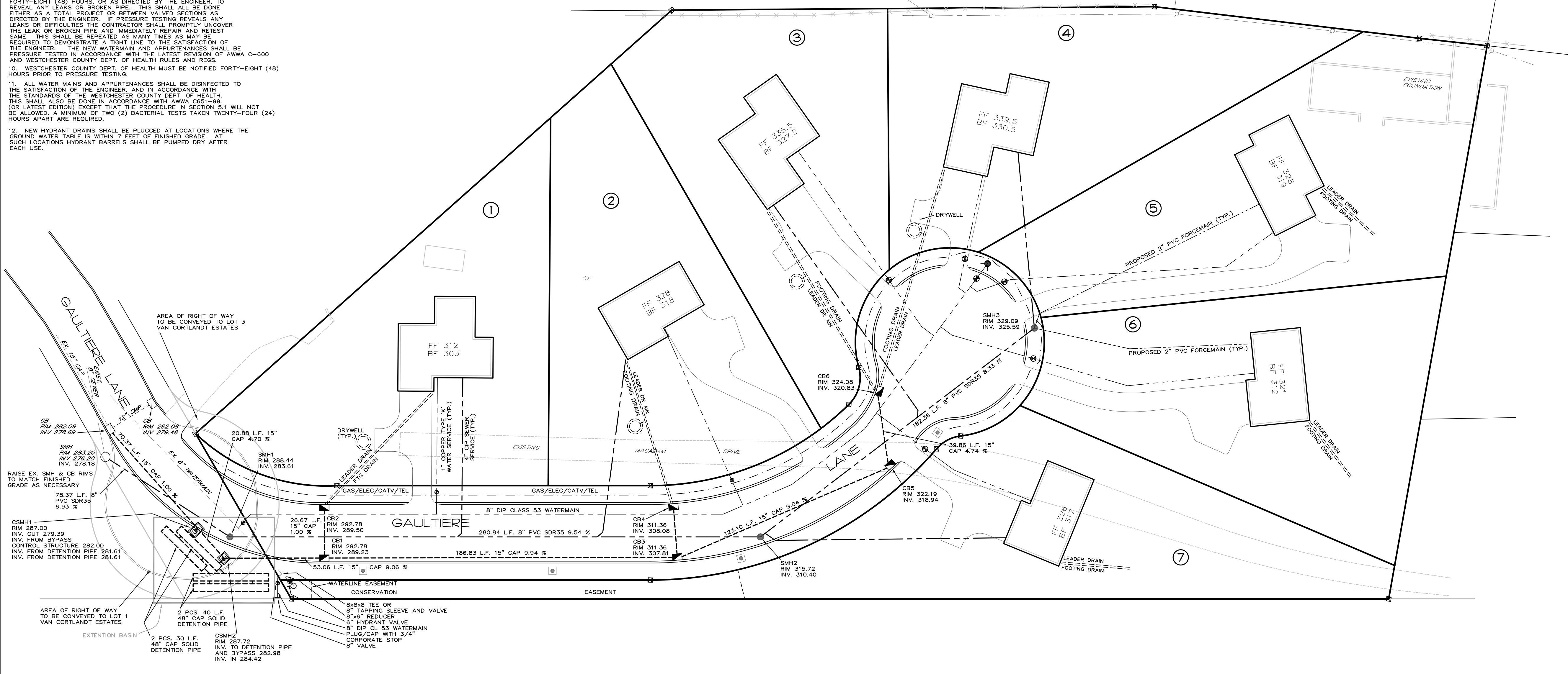


LEGEND

EXISTING	PROPOSED	DESCRIPTION
[Symbol]	[Symbol]	CATCH BASIN
[Symbol]	[Symbol]	DRAIN MANHOLE
[Symbol]	[Symbol]	DRAIN INLET
[Symbol]	[Symbol]	HEADWALL
[Symbol]	[Symbol]	DRY WELL
[Symbol]	[Symbol]	SEWER MANHOLE
[Symbol]	[Symbol]	WATER VALVE
[Symbol]	[Symbol]	HYDRANT
[Symbol]	[Symbol]	MONUMENT
[Symbol]	[Symbol]	CONTOUR LINE
[Symbol]	[Symbol]	SPOT ELEVATION
[Symbol]	[Symbol]	UTILITY POLE
[Symbol]	[Symbol]	STREET LIGHT

PIPE SCHEDULE

WATERMAIN	8" DIP CLASS 53
WATER SERVICE	1" COPPER TYPE "K"
SEWER MAIN	8" PVC SDR 35
SEWER SERVICE	4" EXTRA HEAVY WEIGHT CP
FORCEMAIN	2" PVC SCHEDULE 80
DRAIN	CAP
LEADER AND FOOTING DRAIN	SEE PLAN FOR SIZE(S)
	6" PVC SDR 35



Unauthorized alterations or additions to this drawing is a violation of Section 7209 (2) of the New York State Education Law.

REVISED: OCTOBER 1, 2000
 REVISED: OCTOBER 16, 2000
 REVISED: NOVEMBER 16, 2000

Extention BasinSM SYSTEMS
 13 Dove Court, Croton-on-Hudson, NY 10520 1-800-897-7150
 Integrated Stormwater Management Solutions

RALPH G. MASTROMONACO, P.E., P.C.
 Consulting Engineers
 13 Dove Court, Croton-on-Hudson, New York 10520
 (914) 271-4762 (914) 271-2820 Fax

UTILITY PLAN
 OF
GAULTIERE HEIGHTS
 PREPARED FOR
ANTONIO VELARDO INC.
 TOWN OF OSSINING
 WESTCHESTER COUNTY, NY
 SEPTEMBER 19, 2000
 SCALE AS SHOWN
 SHEET OF SHEETS