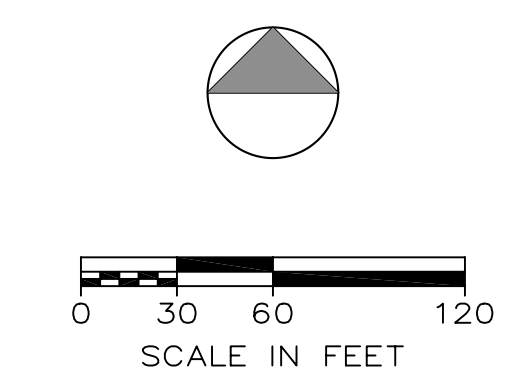


LOCATION MAP
SCALE: 1" = 1400'



LEGEND

| EXISTING | PROPOSED | DESCRIPTION |
|----------|----------|--------------------|
| (Symbol) | (Symbol) | CATCH BASIN |
| (Symbol) | (Symbol) | DRAIN MANHOLE |
| (Symbol) | (Symbol) | SAN. SEWER MANHOLE |
| (Symbol) | (Symbol) | HYDRANT |
| (Symbol) | (Symbol) | WATER VALVE |
| (Symbol) | (Symbol) | HEADWALL |
| (Symbol) | (Symbol) | CONTOUR LINE |

Note: No further building development shall be undertaken on any of the unimproved portions of the site. The foregoing shall be a Conservation Easement in favor of the Town of Cortlandt in satisfaction of condition #8 of Town of Cortlandt Resolution No. 235-04.

NOTE:
MAXIMUM ROAD GRADE: 12%
TOTAL LENGTH OF PROPOSED TRAILS: 1.44 MILES

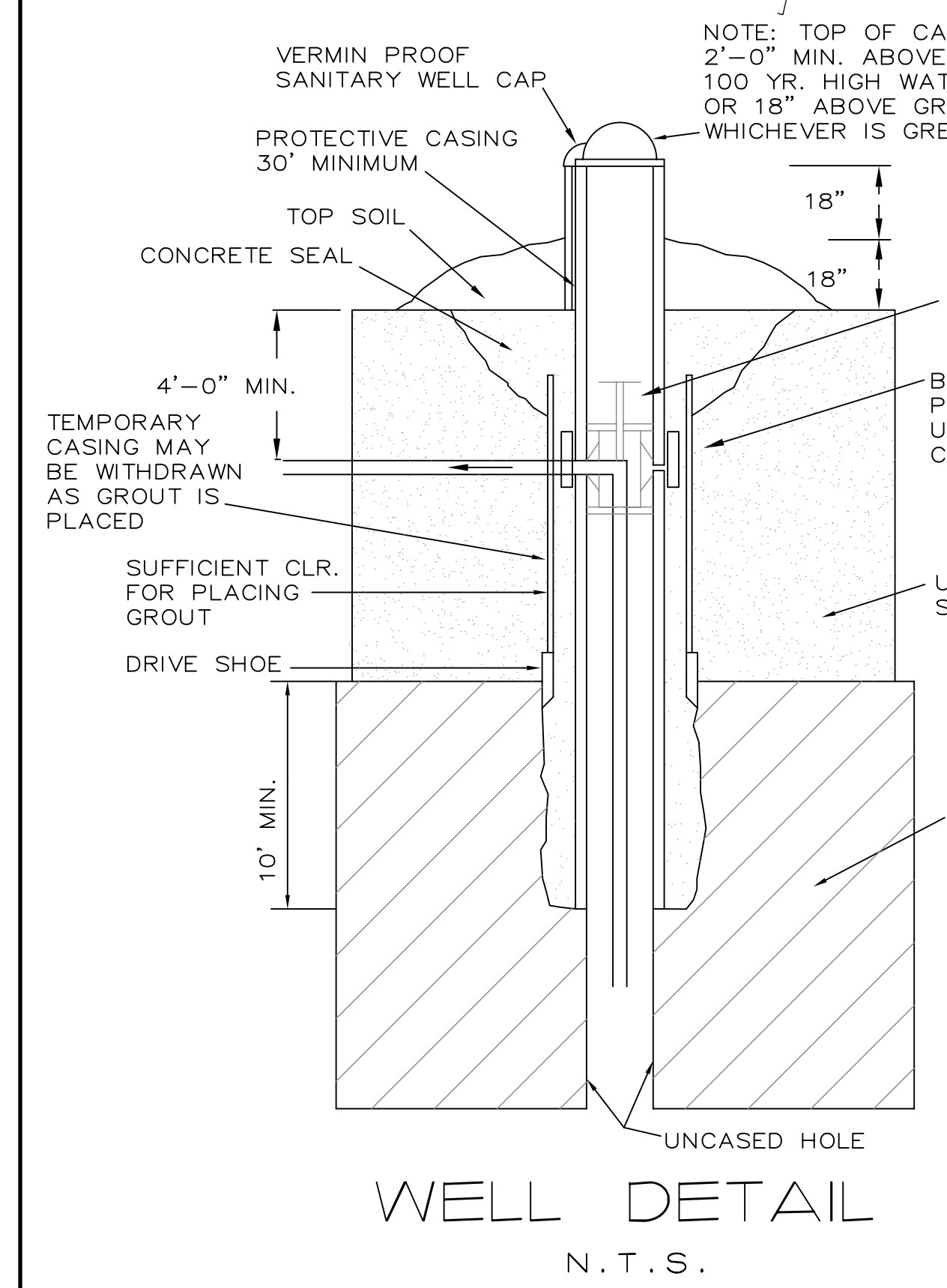
WILDER BALTER PARTNERS, LLC
570 TAXTER ROAD, 6TH FLOOR
ELMSFORD, NEW YORK 10523

Extention Basin SYSTEMS
13 Dove Court, Clifton-on-Hudson, NY 10520 1-800-897-7150
Integrated Stormwater Management Solutions

RALPH G. MASTROMONACO, PE, P.C.
Consulting Engineers
13 Dove Court, Clifton-on-Hudson, New York 10520
(914) 271-4762 (914) 271-2820 Fax

UTILITY PLAN
161 UNIT
SENIOR HOUSING PLAN
JACOBS HILL VILLAGE
TOWN OF CORTLANDT
AND
CITY OF PEEKSKILL,
WESTCHESTER CO., NY
JUNE 30, 2004
SHEET OF SHEETS

REVISED: JULY 22, 2005
REVISED: JUNE 21, 2005
REVISED: MAY 10, 2005
REVISED: FEBRUARY 16, 2005
REVISED: JANUARY 9, 2005
REVISED: NOVEMBER 24, 2004
REVISED: SEPTEMBER 23, 2004
REVISED: AUGUST 18, 2004
REVISED: AUGUST 11, 2004
REVISED: JULY 28, 2004
REVISED: JULY 22, 2004



NOTES:
PROPOSED WELLS ARE FOR IRRIGATION,
AND NOT FOR POTABLE WATER.
THERE ARE NO SEPTIC SYSTEMS WITHIN
200' OF PROPOSED WELLS.

Unauthorized alterations or additions to this drawing is a violation of Section 7209 (2) of the New York State Education Law.