

- LEGEND**
- | | | |
|----------|----------|--------------------|
| EXISTING | PROPOSED | |
| ○ | ○ | CATCH BASIN |
| ○ | ○ | DRAIN MANHOLE |
| ○ | ○ | SAN, SEWER MANHOLE |
| ○ | ○ | HYDRANT |
| ○ | ○ | DRAIN INLET |
| ○ | ○ | WATER VALVE |
| ○ | ○ | HEADWALL |
| ○ | ○ | DRY WELL |
| ○ | ○ | CONTOUR LINE |
| ○ | ○ | LIGHT POLE |

ZONING ANALYSIS
VILLAGE OF OSSINING

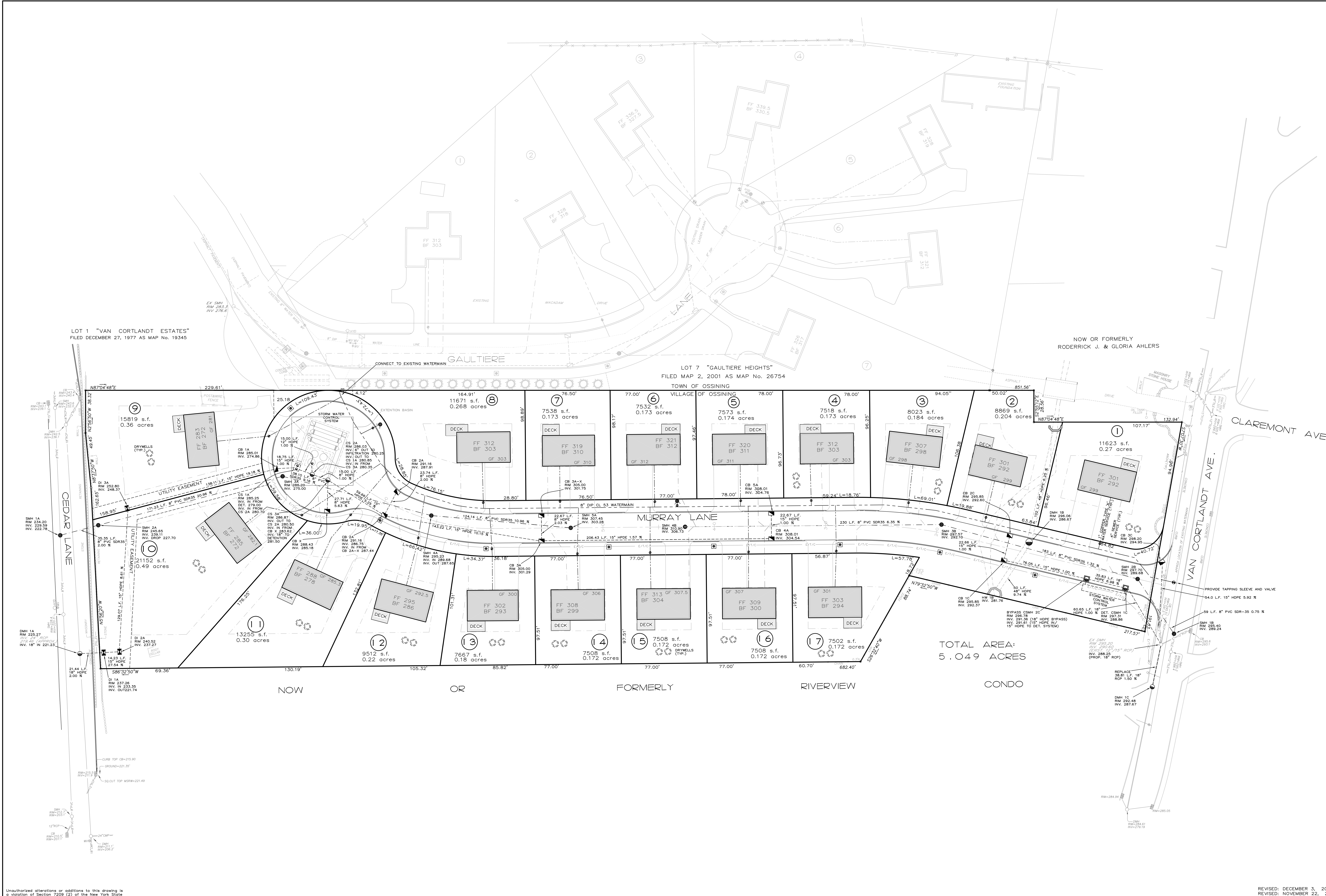
DISTRICT	REQUIRED	PROPOSED
MINIMUM LOT SIZE	5-75	7,502 SQ. FT.
LOT WIDTH	ONE FAMILY 75 FT.	75 FT.
MINIMUM LOT DIMENSIONS		
FRONT	30 FT.	30 FT.
SIDE	12 FT.	12 FT.
ONE	28 FT.	28 FT.
TOTAL OF TWO	30 FT.	30 FT.
REAR		
MAXIMUM HEIGHT OF BUILDING	2 1/2 STORIES	2 1/2 STORIES
IN FEET	35 FT.	35 FT.
MINIMUM OFF-STREET PARKING	2/DU	2/DU
SPACES		
SECTION	2	
PLATE	2	
BLOCK	1	
LOT	1	

Extention Basin
SYSTEMS

13 Dove Court, Croton-on-Hudson, NY 10520 1-800-897-7150
Integrated Stormwater Management Solutions

RALPH G. MASTROMONACO, P.E., P.C.
Consulting Engineers
13 Dove Court, Croton-on-Hudson, New York 10520
(914) 271-4762 (914) 271-2820 Fax

UTILITY PLAN
SUBDIVISION
OF
VAN CORTLANDT
ESTATES
VILLAGE OF OSSINING
TOWN OF OSSINING
WESTCHESTER CO., NY
AUGUST 27, 2002
SHEET OF SHEETS



Unauthorized alterations or additions to this drawing is a violation of Section 7209 (2) of the New York State Education Law.

REVISED: DECEMBER 3, 2002
REVISED: NOVEMBER 22, 2002
REVISED: NOVEMBER 11, 2002